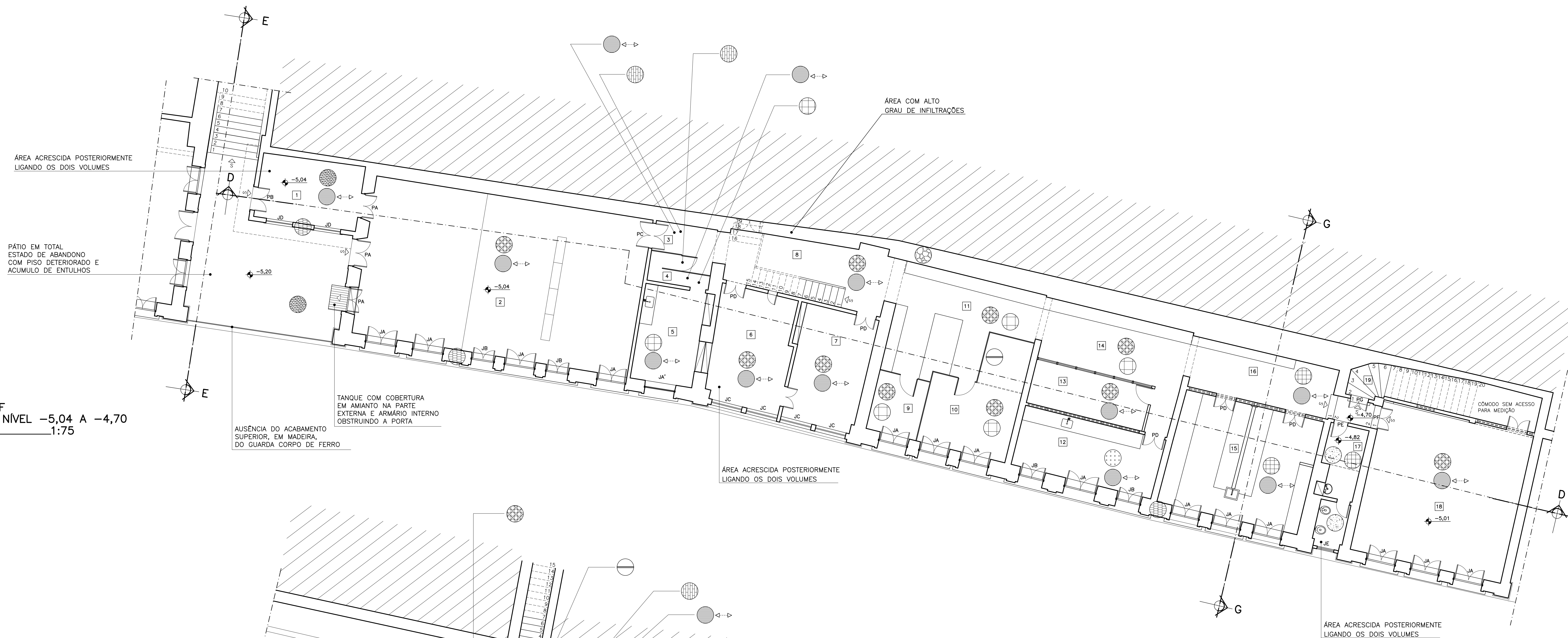
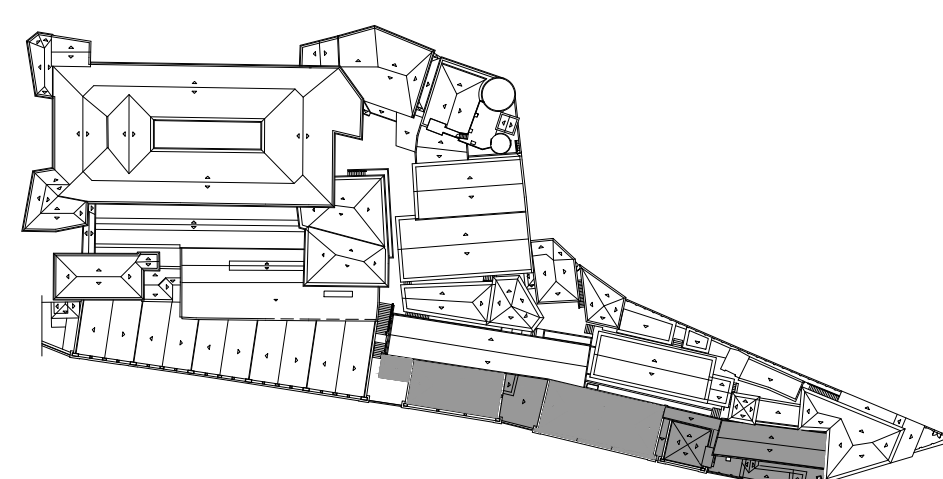
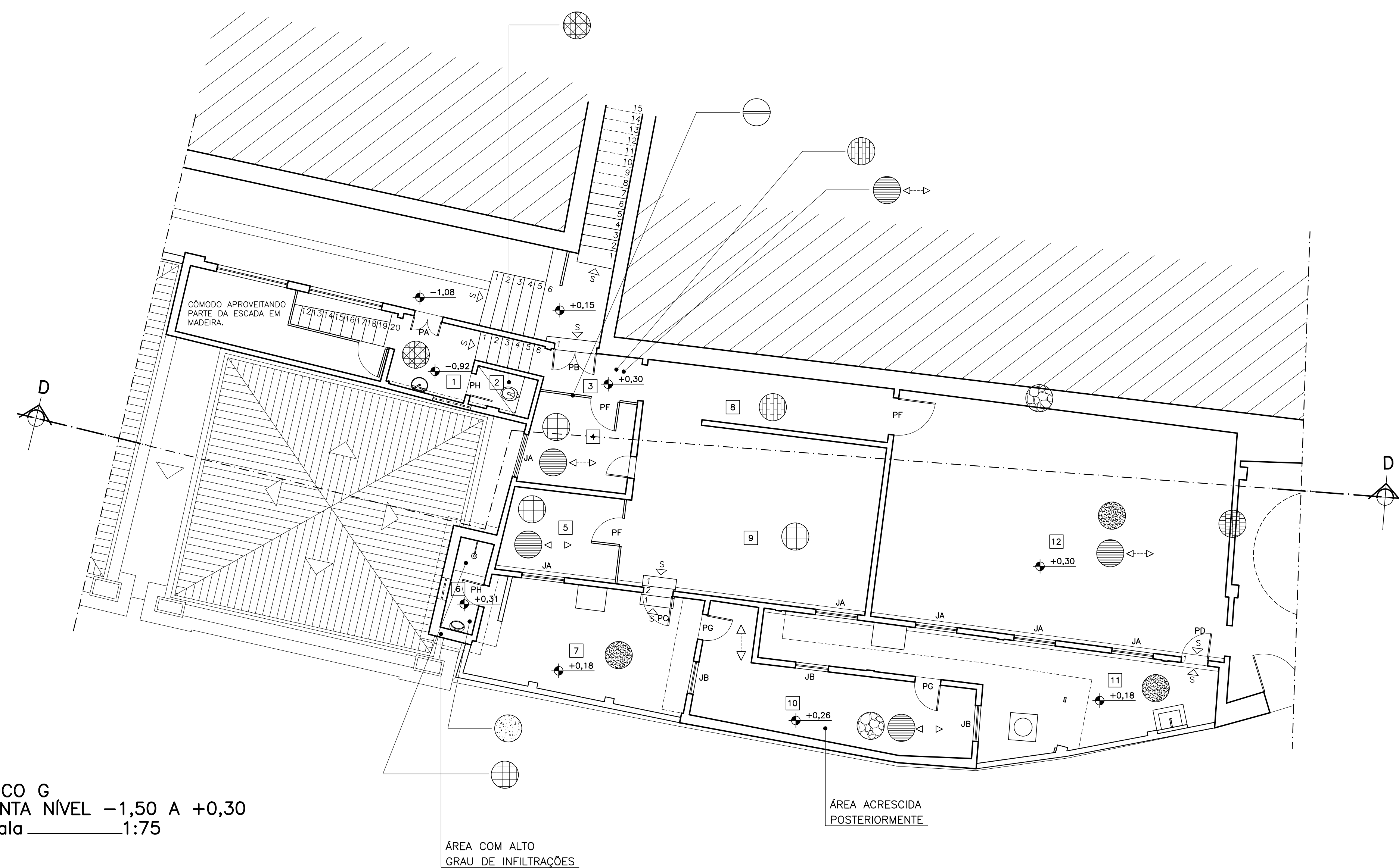


BLOCO F
PLANTA NÍVEL -5,04 A -4,70
escala 1:75



BLOCO G
PLANTA NÍVEL -1,50 A +0,30
escala 1:75



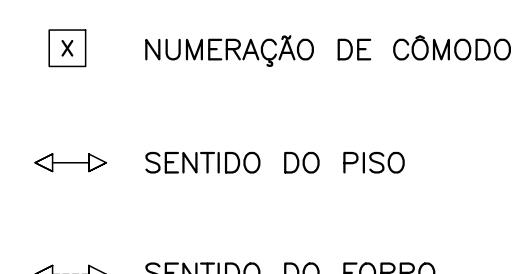
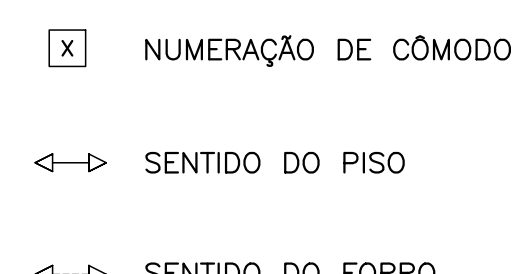
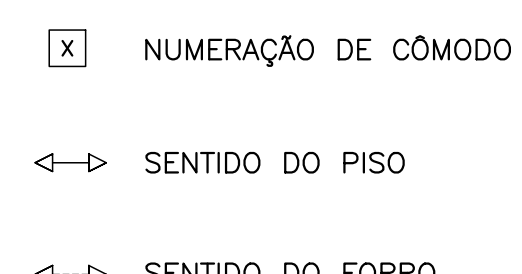
ALVENARIAS



FORROS



PISOS



UFOP UNIVERSIDADE FEDERAL DE OURO PRETO			
PREFEITURA UNIVERSITÁRIA/CORR. DE ARQUITETURA E PROJETOS COMPLEMENTARES			
PROJETO	ARQUITETURA	CONTEÚDO	DATA
ANTIGO PALÁCIO DOS GOVERNADORES	ESCOLA DE MINAS	PLANTAS BLOCOS F,G	JUNHO 2004
DIAGNÓSTICO		NÍVEIS -5,04 A +0,30	ESCALA
			1/75
AUTOR DO PROJETO			DESENHO
ARQUITETAS:			ERIKA JORGE
MARIA CARMEN PERILO	CREA:18.785/D		FASE
ZENOBIA VANDA GRZBOWSKI	CREA:28.736/D		
REITOR	PREFEITO	RESP. UNO/SETOR	CÓDIGO